

# Upbound – the **easiest place** to build, deploy, and manage cloud platforms using control planes

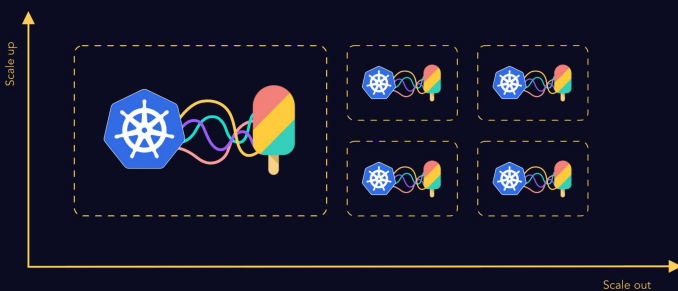


Upbound is a platform for building internal developer platforms using control planes. It offers a new methodology for building an internal developer platform, purpose-built for your organization. Customers can build, deploy, manage, secure, and use their platforms all from a single point of control.

Upbound is democratizing the best kept secret in cloud computing — the control plane. By leveraging custom APIs, cloud engineers are no longer hindered by configuration drift, multiplying workspaces and frustrated developers. With Upbound, platform engineers get centralized control, governance and stability and developers get freedom of self service.

## CROSSPLANE

100s of CRDs



- Scale out full Kubernetes clusters
- Single Tenant
- No Lifecycle Management
- No Fleet Management

## MANAGED CONTROL PLANES

10,000s of CRDs



- Scale out control planes
- Single and Multi-Tenant
- Full Lifecycle Management
- Fleet Management

## WHAT YOU GET WITH UPBOUND

### Managed Control Planes

Upbound manages the underlying infrastructure, auto-scales users' control planes to support platforms running >1,000 CRDs.

### Automatic Management of Core Components

Automatic management of major and minor upgrades of core components on behalf of the user. Automatic snapshotting of platform state for disaster recovery.

### Integrate with GitOps Flows

The managed control plane connector lets users connect their managed control planes running in Upbound to application clusters running elsewhere. This allows users to declare their desired state in Git to invoke APIs on their managed control planes.

### Command & Control Center for Day 2 Crossplane Operations

The Upbound Console allows users to view control plane usage, manage operations, debug API calls flowing through users' control planes, and integrate with logging and monitoring solutions.

### Seamless Git Integration

Managed control planes on Upbound install API definitions that sync directly from Version Control Services (we support GitHub integration at GA), allowing teams to integrate with the Git PR flows which engineers know and love to build their APIs.

## THE INVENTORS OF CROSSPLANE

Upbound invented the popular open-source project, Crossplane. With over 7,500 Github stars and over 8,000 Slack members, Crossplane is a framework for building cloud native control planes without needing to write code. Upbound democratized control plane technology with the Crossplane project, and continues to drive it forward as maintainers and contributors.

## LET'S CHAT

If you're interested in revolutionizing your platform with Upbound's managed control planes, sign up for the free trial here!

